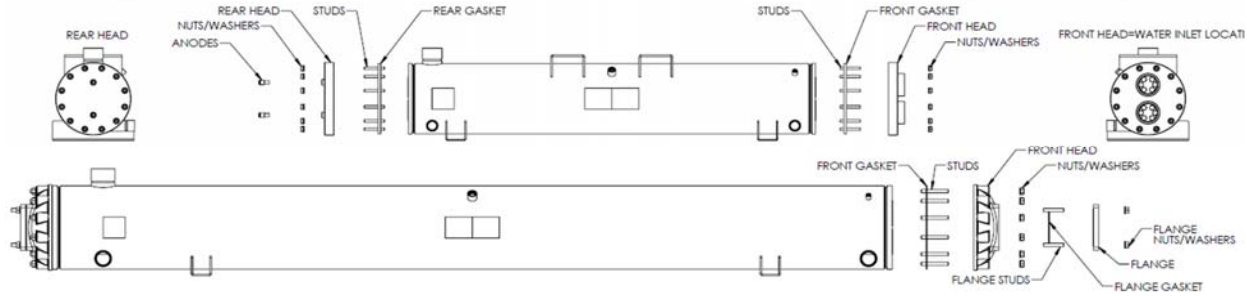


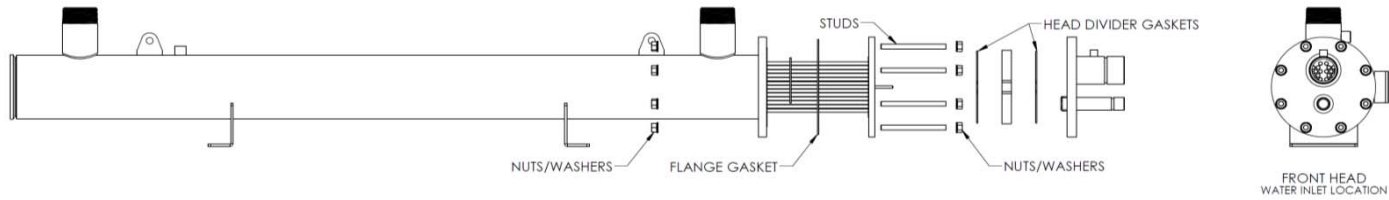
SERIES	CONDENSER	FRONT HEAD	FRONT GASKET	REAR HEAD	REAR GASKET	FRONT STUDS	WASHERS	NUTS (QTY)	REAR STUDS	WASHERS	NUTS (QTY)	FLANGE	FLANGE GASKET	FLANGE STUDS	WASHERS	NUTS (QTY)
STC	---005 S---	P00000051	P00000074	P00000063	P00000067	PR0000032	PR0000024	PR0000019 (6)	PR0000031	PR0000024	PR0000019 (6)	-	-	-	-	-
	---007 S---	P00000052	P00000074	P00000063	P00000067	PR0000032	PR0000024	PR0000019 (6)	PR0000031	PR0000024	PR0000019 (6)	-	-	-	-	-
	---010 S---	P00000052	P00000074	P00000063	P00000067	PR0000032	PR0000024	PR0000019 (6)	PR0000126	PR0000024	PR0000019 (6)	-	-	-	-	-
	---015 S---	P000001806	P00000107	P000001807	P00000068	PR0000032	PR0000024	PR0000019 (6)	PR0000032	PR0000024	PR0000019 (6)	-	-	-	-	-
	---020 S---	P000001876	P00000068	P000001602	P00000114	PR0000032	PR0000024	PR0000019 (6)	PR0000032	PR0000024	PR0000019 (6)	-	-	-	-	-
	---020 S- L	P000002000	P00000075	P000001997	P00000068	PR0000032	PR0000024	PR0000019 (6)	PR0000032	PR0000024	PR0000019 (6)	-	-	-	-	-
	---025 S---	P000001876	P00000068	P000001602	P00000114	PR0000032	PR0000024	PR0000019 (6)	PR0000032	PR0000024	PR0000019 (6)	-	-	-	-	-
	---025 S- L	P000002000	P00000075	P000001997	P00000068	PR0000032	PR0000024	PR0000019 (6)	PR0000032	PR0000024	PR0000019 (6)	-	-	-	-	-
	---030 S---	P000000054	P00000069	P000001444	P00000078	P00000867	PR0000024	PR0000019 (12)	P00000867	PR0000024	PR0000019 (12)	-	-	-	-	-
	---030 S- L	P000000167	P00000076	P000001452	P00000069	P00000867	PR0000024	PR0000019 (12)	P00000867	PR0000024	PR0000019 (12)	-	-	-	-	-
	---040 S---	P000001122	P00000069	P000001444	P00000078	P00000867	PR0000024	PR0000019 (12)	P00000867	PR0000024	PR0000019 (12)	-	-	-	-	-
	---040 S- L	P000000167	P00000076	P000001452	P00000069	P00000867	PR0000024	PR0000019 (12)	P00000867	PR0000024	PR0000019 (12)	-	-	-	-	-
	---050 S---	P000001122	P00000069	P000001444	P00000078	P00000867	PR0000024	PR0000019 (12)	P00000867	PR0000024	PR0000019 (12)	-	-	-	-	-
	---050 S- L	P000000167	P00000076	P000001452	P00000069	P00000867	PR0000024	PR0000019 (12)	P00000867	PR0000024	PR0000019 (12)	-	-	-	-	-
	---060 S---	P000000056	P00000070	P000000066	P00000079	PR00000111	PR00000026	PR00000021 (12)	PR00000111	PR00000026	PR00000021 (12)	-	-	-	-	-
	---070 S---	P000000056	P00000070	P000000066	P00000079	PR00000111	PR00000026	PR00000021 (12)	PR00000111	PR00000026	PR00000021 (12)	-	-	-	-	-
	---080 S---	P000000056	P00000070	P000000066	P00000079	PR00000111	PR00000026	PR00000021 (12)	PR00000111	PR00000026	PR00000021 (12)	-	-	-	-	-
	---100 S---	P000000057	P00000079	P000000057	P00000079	PR00000111	PR00000026	PR00000021 (12)	PR00000111	PR00000026	PR00000021 (12)	P000000707	P000000706	P000000710	PR00000026	PR000000021 (8)
	---100 S- L	P000000056	P00000070	P000000066	P00000079	PR00000111	PR00000026	PR00000021 (12)	PR00000111	PR00000026	PR00000021 (12)	-	-	-	-	-
	---125 S---	P000000057	P00000079	P000000057	P00000079	PR00000111	PR00000026	PR00000021 (12)	PR00000111	PR00000026	PR00000021 (12)	P000000707	P000000706	P000000710	PR00000026	PR000000021 (8)
---125 S- L	P000000056	P00000070	P000000066	P00000079	PR00000111	PR00000026	PR00000021 (12)	PR00000111	PR00000026	PR00000021 (12)	-	-	-	-	-	
---150 S---	P000000145	P000000622	P000000145	P000000622	P000000757(12)	PR0000027(24)	PR0000022(24)	P000000757(12)	PR0000027(24)	PR0000022(24)	PR0000022(24)	-	-	-	-	-
---200 S---	P000000121	P000000072	P000000121	P000000072	P000000757(16)	PR0000027(32)	PR0000022(32)	P000000757(16)	PR0000027(32)	PR0000022(32)	PR0000022(32)	-	-	-	-	-
---250 S---	P000001435	P000001437	P000001435	P000001437	P000002168(16)	PR0000027(32)	PR0000022(32)	P000002168(16)	PR0000027(32)	PR0000022(32)	PR0000022(32)	-	-	-	-	-



SERIES	CONDENSER	ZINC ANODE (QTY)	FRONT HEAD	FRONT GASKET	REAR HEAD	REAR GASKET	STUDS	WASHERS	NUTS (QTY)	FLANGE	FLANGE GASKET	FLANGE STUDS	WASHERS	NUTS
STCB	--003 B-__	P000001688(2)	P000000955	P000000927	P000000956	P000000935	P000000923(12)	P000000699(12)	P000000700(12)	-	-	-	-	-
	--005 B-__	P000001688(2)	P000000955	P000000927	P000000956	P000000935	P000000923(12)	P000000699(12)	P000000700(12)	-	-	-	-	-
	--007 B-__	P000001688(2)	P000000984	P000000985	P000000956	P000000981	P000000923(12)	P000000699(12)	P000000700(12)	-	-	-	-	-
	--010 B-__	P000001688(2)	P000000984	P000000985	P000000956	P000000981	P000000923(12)	P000000699(12)	P000000700(12)	-	-	-	-	-
	--015 B-__	P000001688(2)	P000001676	P000000107	P000001677	P000000068	P000000924(12)	P000000699(12)	P000000700(12)	-	-	-	-	-
	--020 B-__	P000001688(2)	P000000958	P000000068	P000000959	P000000114	P000000924(12)	P000000699(12)	P000000700(12)	-	-	-	-	-
	--020 B- L_	P000001688(2)	P000001674	P000000075	P000001677	P000000068	P000000924(12)	P000000699(12)	P000000700(12)	-	-	-	-	-
	--025 B-__	P000001688(2)	P000000958	P000000068	P000000959	P000000114	P000000924(12)	P000000699(12)	P000000700(12)	-	-	-	-	-
	--025 B- L_	P000001688(2)	P000001674	P000000075	P000001677	P000000068	P000000924(12)	P000000699(12)	P000000700(12)	-	-	-	-	-
	--030 B-__	P000001688(2)	P000002223	P000000068	P000000959	P000000114	P000000924(12)	P000000699(12)	P000000700(12)	-	-	-	-	-
	--030 B- L_	P000001688(2)	P000001676	P000000107	P000001677	P000000068	P000000924(12)	P000000699(12)	P000000700(12)	-	-	-	-	-
	--035 B-__	P000001688(2)	P000001003	P000000893	P000001004	P000000894	P000000752(24)	P000000699(24)	P000000700(24)	-	-	-	-	-
	--035 B- L_	P000001688(2)	P000002221	P000000076	P000001945	P000000069	P000000752(24)	P000000699(24)	P000000700(24)	-	-	-	-	-
	--040 B-__	P000001688(2)	P000001003	P000000069	P000001004	P000000078	P000000752(24)	P000000699(24)	P000000700(24)	-	-	-	-	-
	--040 B- L_	P000001688(2)	P000002221	P000000076	P000001945	P000000069	P000000752(24)	P000000699(24)	P000000700(24)	-	-	-	-	-
	--045 B-__	P000001688(2)	P000001003	P000000893	P000001004	P000000894	P000000752(24)	P000000699(24)	P000000700(24)	-	-	-	-	-
	--045 B- L_	P000001688(2)	P000002221	P000000076	P000001945	P000000069	P000000752(24)	P000000699(24)	P000000700(24)	-	-	-	-	-
	--050 B-__	P000001688(2)	P000001003	P000000069	P000001004	P000000078	P000000752(24)	P000000699(24)	P000000700(24)	-	-	-	-	-
	--050 B- L_	P000001688(2)	P000002221	P000000076	P000001945	P000000069	P000000752(24)	P000000699(24)	P000000700(24)	-	-	-	-	-
	--065 B-__	P000001688(2)	P000002345	P000000070	P000002344	P000000079	P000001026(24)	P000001027(24)	P000001028(24)	-	-	-	-	-
--075 B-__	P000001688(2)	P000002345	P000000070	P000002344	P000000079	P000001026(24)	P000001027(24)	P000001028(24)	-	-	-	-	-	
--100 B-__	P000001688(2)	P000002346	P000000079	P000002346	P000000079	P000001026(24)	P000001027(24)	P000001028(24)	P000000707	P000000706	P000001026(8)	P000001027(8)	P000001028(8)	
--100 B- L_	P000001688(2)	P000002345	P000000070	P000002344	P000000079	P000001026(24)	P000001027(24)	P000001028(24)	-	-	-	-	-	
--120 B-__	P000001688(2)	P000002346	P000000079	P000002346	P000000079	P000001026(24)	P000001027(24)	P000001028(24)	P000000707	P000000706	P000001026(8)	P000001027(8)	P000001028(8)	
--120 B- L_	P000001688(2)	P000002345	P000000070	P000002344	P000000079	P000001026(24)	P000001027(24)	P000001028(24)	-	-	-	-	-	



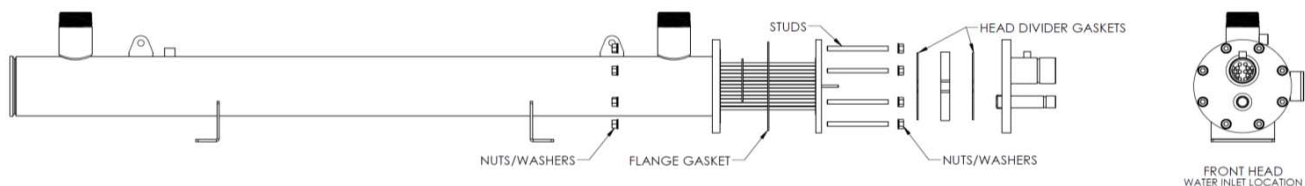
CONDENSER PARTS
CRC-0054
JUNE 2014



SERIES	EVAPORATOR	HEAD DIV. GASKETS (REQ. 2)	NUTS (QTY)	REAR HEAD	STUDS (QTY)	FLANGE GASKET	CENTER STUD (QTY)
STEM	--030-1 ___	P000002555-1	PR00000021 (24)	PR00000026 (24)	PR00000092 (12)	P000002578	-
	--030-2 ___	P000002555-2	PR00000021 (24)	PR00000026 (24)	PR00000092 (12)	P000002578	-
	--040-1 ___	P000002563-1	PR00000021 (24)	PR00000026 (24)	PR00000092 (12)	P000000329	-
	--040-2 ___	P000002563-2	PR00000021 (24)	PR00000026 (24)	PR00000092 (12)	P000000329	-
	--050-1 ___	P000002563-1	PR00000021 (24)	PR00000026 (24)	PR00000092 (12)	P000000329	-
	--050-2 ___	P000002563-2	PR00000021 (24)	PR00000026 (24)	PR00000092 (12)	P000000329	-
	--060-1 ___	P000002563-1	PR00000021 (24)	PR00000026 (24)	PR00000092 (12)	P000000329	-
	--060-2 ___	P000002563-2	PR00000021 (24)	PR00000026 (24)	PR00000092 (12)	P000000329	-
	--075-1 ___	P000002563-1	PR00000021 (24)	PR00000026 (24)	PR00000092 (12)	P000000329	-
	--075-2 ___	P000002563-2	PR00000021 (24)	PR00000026 (24)	PR00000092 (12)	P000000329	-
	--100-1 ___	P000002755-1	PR00000021 (24)	PR00000026 (24)	PR00000092 (12)	P000002806	-
	--100-2 ___	P000002755-2	PR00000021 (24)	PR00000026 (24)	PR00000092 (12)	P000002806	-
	--120-1 ___	P000002839-1	PR00000022 (32)	PR00000027 (32)	PR00000074 (16)	P000002844	-
	--120-2 ___	P000002839-2	PR00000022 (32)	PR00000027 (32)	PR00000074 (16)	P000002844	-
	--150-2 ___	P000002529	PR00000022 (32)	PR00000027 (32)	PR00000074 (16)	P000001092	-
	--175-2 ___	P000002810	PR00000022 (33)	PR00000027 (33)	PR00000073 (16)	P000001374	PR00000100 (1)
	--200-2 ___	P000002810	PR00000022 (33)	PR00000027 (33)	PR00000073 (16)	P000001374	PR00000100 (1)
	--250-2 ___	P000002732	PR00000022 (43)	PR00000027 (43)	PR00000101 (20)	P000002726	PR00000100 (3)
--275-2 ___	P000002680	PR00000022 (43)	PR00000027 (43)	PR00000101 (20)	P000002726	PR00000100 (3)	
--300-2 ___	P000002791	PR00000022 (59)	PR00000027 (59)	PR00000101 (28)	P000002832	PR00000100 (3)	



CONDENSER PARTS
CRC-0054
JUNE 2014



SERIES	EVAPORATOR	HEAD DIV. GASKETS (REQ. 2 EA)	NUTS (QTY)	WASHERS (QTY)	STUDS (QTY)	FLANGE GASKET	CENTER STUD (QTY)
STEH	--030-1 ___	P000002555-1	PR00000021 (24)	PR00000026 (24)	PR00000092 (12)	P000002578	-
	--030-2 ___	P000002555-2	PR00000021 (24)	PR00000026 (24)	PR00000092 (12)	P000002578	-
	--040-1 ___	P000002563-1	PR00000021 (24)	PR00000026 (24)	PR00000092 (12)	P000000329	-
	--040-2 ___	P000002563-2	PR00000021 (24)	PR00000026 (24)	PR00000092 (12)	P000000329	-
	--050-1 ___	P000002563-1	PR00000021 (24)	PR00000026 (24)	PR00000092 (12)	P000000329	-
	--050-2 ___	P000002563-2	PR00000021 (24)	PR00000026 (24)	PR00000092 (12)	P000000329	-
	--060-1 ___	P000002563-1	PR00000021 (24)	PR00000026 (24)	PR00000092 (12)	P000000329	-
	--060-2 ___	P000002563-2	PR00000021 (24)	PR00000026 (24)	PR00000092 (12)	P000000329	-
	--075-1 ___	P000002563-1	PR00000021 (24)	PR00000026 (24)	PR00000092 (12)	P000000329	-
	--075-2 ___	P000002563-2	PR00000021 (24)	PR00000026 (24)	PR00000092 (12)	P000000329	-
	--100-1 ___	P000002755-1	PR00000021 (24)	PR00000026 (24)	PR00000092 (12)	P000002806	-
	--100-2 ___	P000002755-2	PR00000021 (24)	PR00000026 (24)	PR00000092 (12)	P000002806	-
	--120-1 ___	P000002839-1	PR00000022 (32)	PR00000027 (32)	PR00000074 (16)	P000002844	-
	--120-2 ___	P000002839-2	PR00000022 (32)	PR00000027 (32)	PR00000074 (16)	P000002844	-
	--150-2 ___	P000002529	PR00000022 (32)	PR00000027 (32)	PR00000074 (16)	P000001092	-
	--175-2 ___	P000002810	PR00000022 (33)	PR00000027 (33)	PR00000073 (16)	P000001374	PR00000100 (1)
	--200-2 ___	P000002810	PR00000022 (33)	PR00000027 (33)	PR00000073 (16)	P000001374	PR00000100 (1)
	--250-2 ___	P000002732	PR00000022 (43)	PR00000027 (43)	PR00000101 (20)	P000002726	PR00000100 (3)
	--275-2 ___	P000002680	PR00000022 (43)	PR00000027 (43)	PR00000101 (20)	P000002726	PR00000100 (3)
--300-2 ___	P000002791	PR00000022 (59)	PR00000027 (59)	PR00000101 (28)	P000002832	PR00000100 (3)	